

SPECIFICATIONS

		NTS-372R	NTS-375R
Distance Measurement			
Max. Range	Reflectorless	300m	300m
	1 Prism	5.0km	5.0km
	3 Prism	6.0km	6.0km
	Mini Prism (ø25.4mm)	800m	800m
Accuracy		Reflectorless 5mm+3ppm	Reflector 2mm+2ppm
Reading		Maximum: 99999999.9999 m; Minimum: 0.1mm	
Measuring Time	Reflectorless	Fine mode:<1.2s; Tracking mode:<0.5s	
	Reflector	Fine mode:<1.2s; Tracking mode:<0.5s IR sheet mode:<1.2s	
Atmospheric Correction		Auto correction	
Prism Constant		Auto correction	
Angle Measurement			
Measurement Method		Absolute Encoding	
Diameter of the Raster Disk (Horizontal/ Vertical)		79mm	
Minimum Reading		1" / 5" optional	
Accuracy		2"	5"
Detection Method		Horizontal: Dual	Vertical: Dual
Telescope			
Image		Erect	
Length		154mm	
Effective Aperture		45mm. (DTM: 50mm)	
Magnification		30 X	
Field of View		1° 30'	
Minimum Focus		3"	
Minimum Focussing Distance		1m	
Automatic Compensator			
System		Dual axis liquid-electric sensor compensation	
Working Range		± 3'	
Accuracy		1"	
Sensitivity of Vial			
Plate Vial		30" / 2mm	
Circular Vial		8" / 2mm	
Optical Plummet			
Image		Erect	
Magnification		3×	
Focusing Range		0.5m~∞	
Field of View		5°	
Display			
Type		3.2inches LCD, Touch screen	
Computer Unit			
On-Board		Windows CE.NET English operation system	
Processor		SAMSUNG S3C2410 32-bit risc microprocessor	
Memory		RAM 64M ROM64M	
Interface			
SD card		Supportable	
Serial I/F Port		RS-232C(6pin) USB Mini-Band TypeA	
On-board Battery			
Power Supply		Rechargeable Ni-H battery	
Voltage		7.2VDC	
Operating Time		8hrs (NB-25), 10hrs (NB-25C)	
Size			
Dimension		L200×H350×W190 mm	
Weight		6.0 kg	

STANDARD CONFIGURATION



1. Mainframe 1x
2. Rechargeable Battery 2x
3. Battery Charger 1x
4. Communication Cable 1x
5. Tools Kit 1x
6. Belt for Case 2x
7. Dryer 1x
8. Plummet 1x
9. Carrying Case 1x
10. Operation Manual 1x
11. Software CD 1x
12. Warranty Card 1x
13. QC Pass Certificate 1x
14. Rain Cover 1x

USB Communication Cables



CE-203Y

Battery and Charger



NB-25/NB-25C NC-20

EU/US/JP/UK/UL Type chargers available

COMPATIBLE ACCESSORIES



Solar Filter
NF-20



Diagonal Eyepiece
NE20

ISO 9001:2000



CE



SOUTH

NTS-370R

SERIES TOTAL STATION



Dealer info

SOUTH Q L Enterprises, Inc. dba GeoSolution

Add: 2875 N Berkeley Lake Road NW, Suite 8, Duluth, GA 30096 USA

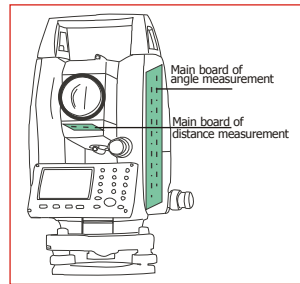
Tel: 678-957-1187 Fax: 678-957-1159

E-mail: sales@geosolution.com

http://www.geosolution.com http://www.ordermo.com

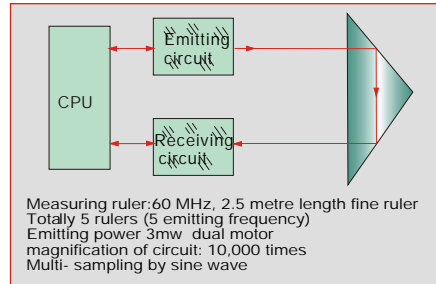
WWW.SOUTHINSTRUMENT.COM
WWW.SOUTHSURVEY.COM

Upgraded Mainboard

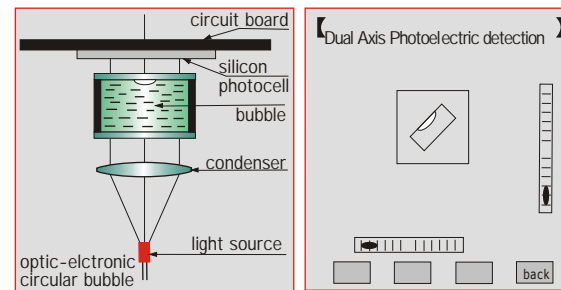


Using different main board for angle measurement and distance measurement, more simple and reasonable structure, easy maintaining.

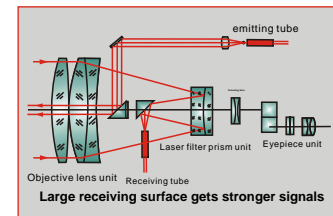
Circuit Diagram



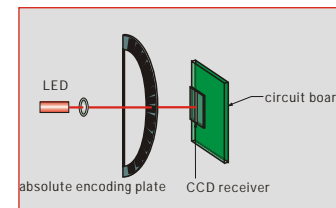
Dual Axis Compensation



Laser Path Diagram



Absolute Encoding Disk



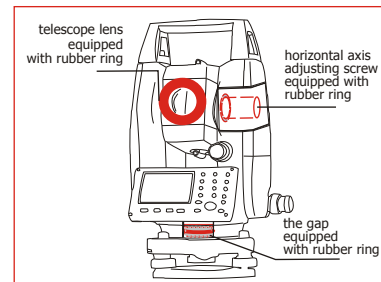
With absolute encoding disk, you can start your work directly as the instrument is powered on. Azimuth angle will be saved even if the power is off incidentally in the job.

Convenient Data Communication



Upload/download data via SD card or miniUSB cable transfer

DustProof & Waterproof: Ip55

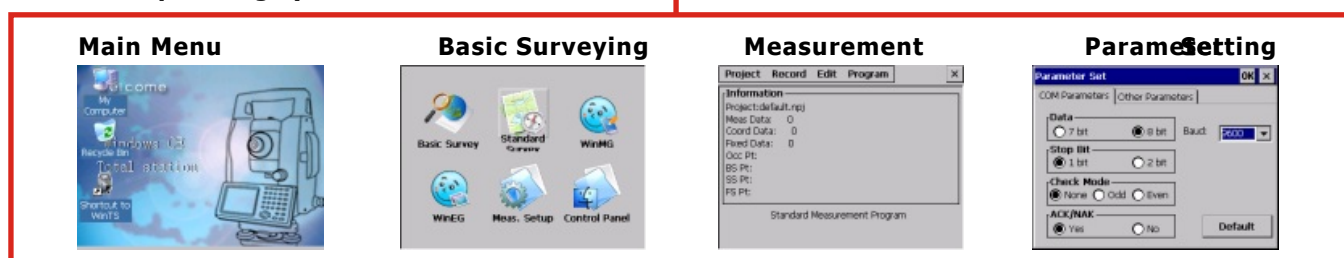


Colorful touch screen



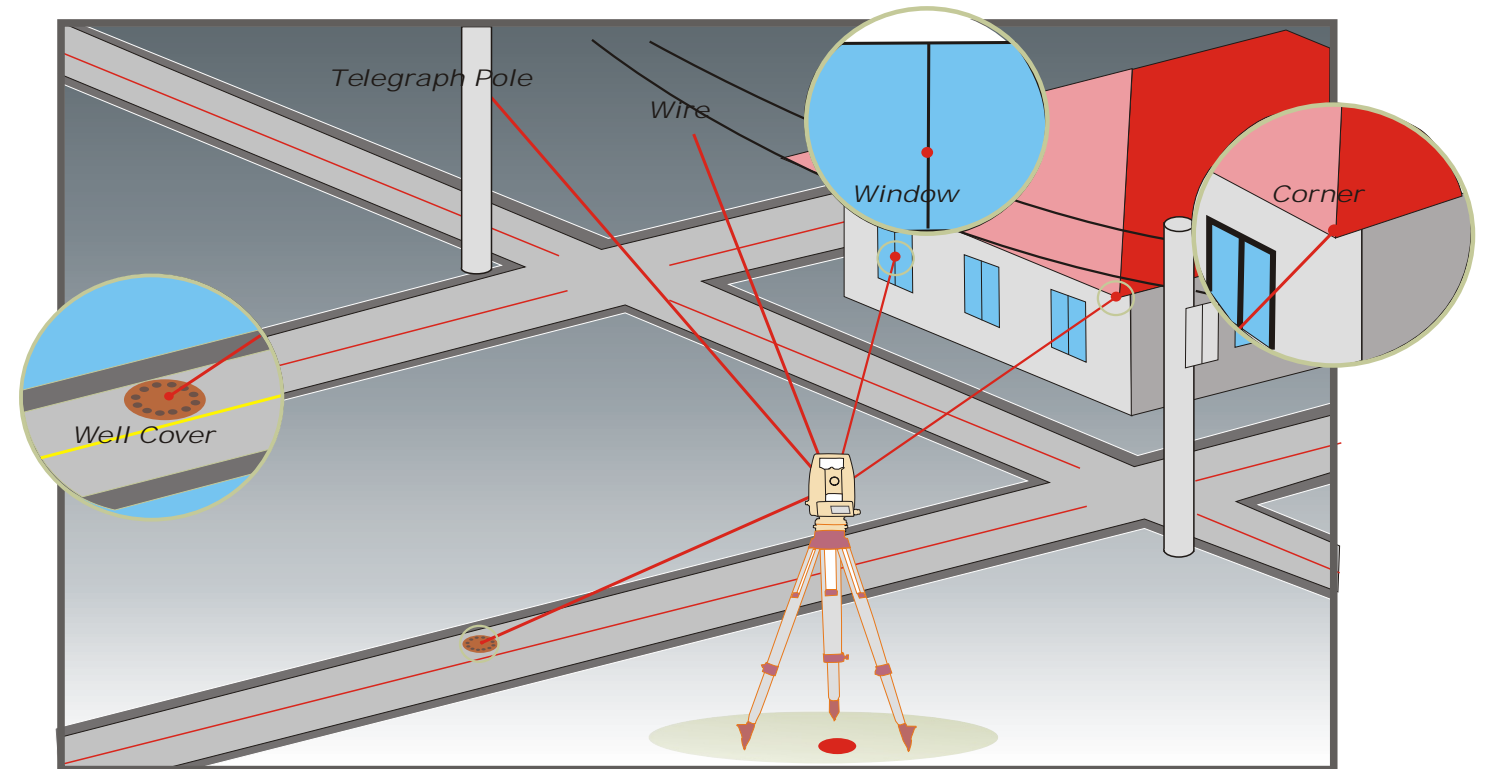
Using Windows CE.NET 4.2 Operating system, 3.2 inches extremely large LCD display of 240x320dpi, shows a large amount of information at a time, makes the measuring operation easy and clear. You can intuitively launch data storing, manipulating and exchanging with PC based on Windows platform.

Windows Operating System



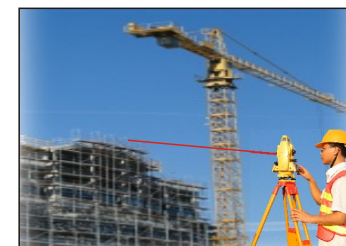
Turning the complex professional job into graphical operation, intuitively and easily even for beginners

LASER DISTANCE MEASUREMENT



APPLICATION OF NTS-370R

Construction Measurement



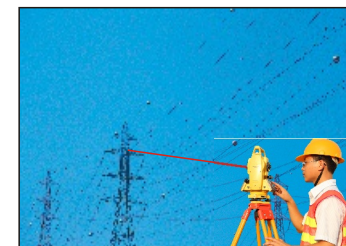
Measure the corner and wall surface by yourself without setting the prism, the efficiency is improved.

Dam Measurement



You don't have to take pains to go around and set prisms. The surveying work is easily finished.

Electric Wire Measurement



No worry about how to set up the prism, no need to use REM application. It is easy to get the data of electric wire.

House Measurement



Obtain the data directly, traditional steel ruler measurement is abandoned.

Tunnel Measurement



Prisms are not necessary. The measuring point is visible, which makes point-layout easier and more convenient.

